
Explore the Benefits of DimGlass®

DimGlass® transforms spaces with innovative smart glass technology and sleek designs. Our products provide on-demand privacy, UV protection, and energy efficiency, allowing for versatile and stylish environments. With dedicated customer service, we ensure that each project meets our clients' unique needs, creating functional and aesthetically pleasing spaces.



Maximize Natural Sunlight: Enjoy abundant natural light while benefiting from UV protection and infrared blockage.



Reduce Energy Costs: Lower your air conditioning expenses with effective heat insulation.



Instant Privacy Control: Switch between privacy and transparency effortlessly using your mobile device, motion sensors, and more.

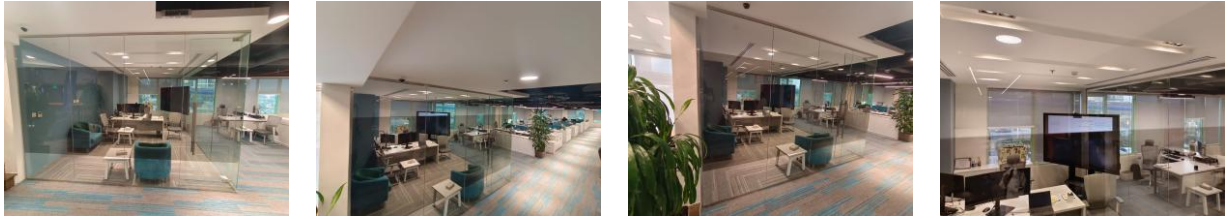


Innovative Technology and Project Development: Experience cutting-edge privacy glass technology that enhances your space.

DimGlass® Features

- **On-Demand Privacy:** Protect your privacy with the ability to switch between transparent and opaque states at your convenience. Enhance your personal space by choosing between openness and privacy effortlessly.
- **Touch to Projection:** Achieve outstanding image quality on the smart film using an HD projector.
- **Safety and Security:** In the event of breakage, glass fragments adhere to the film, minimizing injury risk from shattered glass.
- **Cooling and UV Protection:** Experience effective heat insulation by blocking over 98% of infrared radiation. Additionally, more than 99% of UV rays are blocked, safeguarding your interior furnishings from fading and aging while also protecting your skin from UV damage.
- **Sound Insulation:** Compared to standard glass, our smart film offers a 20% improvement in soundproofing capabilities.
- **Multiple Control Options:** Tailor your experience with various control methods, including remote control, wired control, infrared induction, voice control, and mobile app integration, to meet your diverse needs.

Cloaking Optical Film

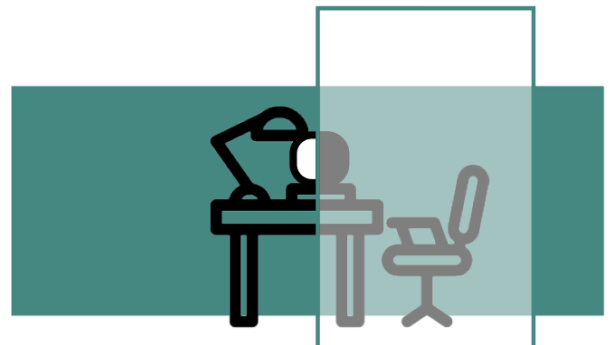


Product Structure

Key Components of Cloaking Optical Film

Cloaking optical films are advanced materials designed to manipulate light in ways that can enhance privacy or create visual effects. The primary materials used in these films include Polyethylene Terephthalate (PET), Polyvinyl Alcohol (PVA), and Cellulose Triacetate (TAC). Here are the key components that make up this film:

- **Polyethylene Terephthalate (PET):** This is a widely used thermoplastic polymer known for its clarity, durability, and excellent barrier properties. PET is commonly utilized in various applications, including packaging and electronics, making it a versatile choice for optical films 1 2.
- **Polyvinyl Alcohol (PVA):** PVA is recognized for its strength and flexibility. It is often used in polarizing films, where it provides essential properties for light manipulation. However, PVA is sensitive to moisture and can be easily scratched, which is why it is typically protected by other materials 3.
- **Cellulose Triacetate (TAC):** TAC is frequently used in optical applications due to its optical clarity and stability. It serves as a protective layer for polarizing films and is essential in enhancing the performance of optical devices.



Product Specs: Cloaking Optical Film

Product name	Cloaking Optical Film
Working mode:	No Power Needed
Color	Clear Grey
Thickness	0.2mm
Width	1200mm, 1300mm, 1400mm, 1500mm (can be customized within the size range)
Length	0-30.5 m (can be customized within the size range)
Light transmittance	42%
Material	PET + Polyvinyl + Triacetate
Cloaking Efficacy	99.95%
Backing Adhesion	Acrylic pressure-sensitive adhesive (high tack)

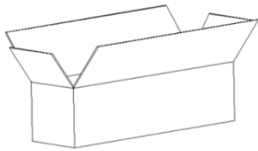
Packaging



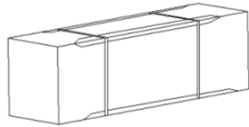
Step 1: Roll the film onto the PVC cylinder and wrap it with Expandable Polystyrene (EPS) for protection.



Step 2: Install wooden boards at both ends of the PVC cylinder to suspend the film in the air, preventing it from directly pressing against the floor and causing damage.



Step 3: Once properly placed and installed, place the assembly into cartons.



Step 4: Wrap a paper shell around the edges to avoid corner wear, and reinforce it with tape.